

# INSTALLATION INSTRUCTIONS FOR FIXTURE

## #3002-32BN.#3002-32VBRS.#3002-42BN.#3002-42VBRS. #3002-58BN.#3002-58VBRS.

**WARNING! SHUT POWER OFF AT FUSE OR CIRCUIT BREAKER.**  
**AVERTISSEMENT! COUPER LE COURANT AU NIVEAU DES FUSIBLES OU DU DISJONCTEUR.**

### ASSEMBLING THE FIXTURE (FIG. 1)

Warning:

Read instructions carefully. If you are unclear as to how to proceed, consult a qualified electrician. NOTE: Proper wiring is essential for the safe operation of this fixture.

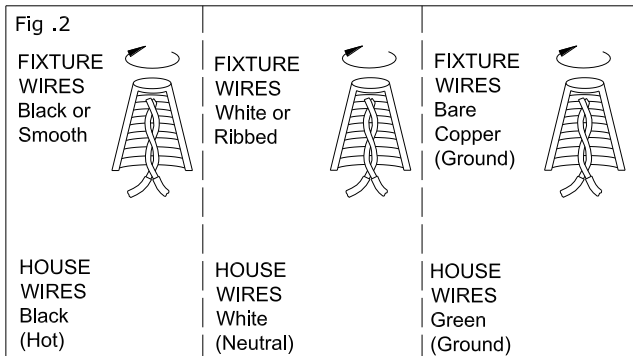
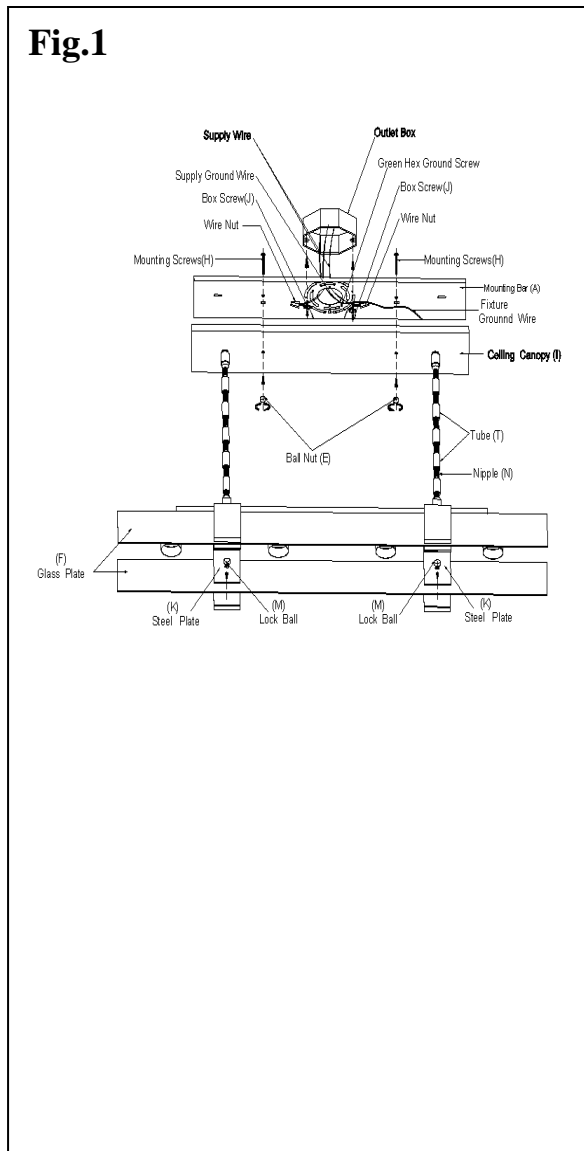
1. Shut off the power supply at the fuse box or circuit breaker. If necessary, remove the old fixture from ceiling including the mounting hardware.
2. Carefully remove the new fixture from the packaging and check that all parts are included as shown in the installation.
3. Carefully unpack whole fixture body and all components.
4. Determine the desired hanging height and fasten the tubes (T) for each other by the nipple (N) onto the fixture body. Pass the wires carefully through inside of each stem as you assemble.
5. Carefully pull wires through the stems and swivel into canopy (I) as shown in Figure 1. (Thread pipe nipples into stems as shown.)
6. Note: There are generally 6 pcs 12" stems (T) and 2 pc 6" stem (T) and 2 pc 3" stem (T) included.
7. Remove the swivel fittings from the canopy by loosening the wing nuts inside the canopy. Thread the swivels onto the top tubes you have installed on the fixture body.
8. Thread the wire and tubes into the canopy and fasten them with the wing nuts you removed in instruction 7.
9. Place the glass plate (F) between the steel plates (K) and fastened it by lock nut (M) tightly.
10. Install the bulbs in accordance with the fixture's specifications.  
**(DO NOT EXCEED THE MAXIMUM WATTAGE RATING!)**  
**(NE PAS DEPASSER LA PUISSANCE NOMINALE MAXIMALE!).**

### MOUNTING THE FIXTURE (Fig. 1)

11. Attach the mounting bar (A) to the outlet box by using the 2 outlet box screws (J). The side of the cross bar marked "GND" must face out.
12. Attach the whole fixture body onto the mounting bar (A) carefully by protruding 2 mounting screws (H) through the mounting holes of the ceiling canopy (I) and make sure to secure fixture body with ceiling canopy (I) and mounting bar (A) by 2 ball nuts (E) tightly.

### CONNECTING THE WIRES (Fig. 2)

1. At this point, connect the electrical wires as shown in figure 2, making sure that all wire connectors are secured. If your outlet box has a ground wire (green or bare copper), connect the ground wire from the fixture to it. Otherwise, connect the fixture's ground wire directly to the cross bar using the green screw provided.
2. After wires are connected, tuck them carefully into the ceiling junction box.



now complete. Return power to the outlet fixture.